

## ACCEPTED MATERIALS AT WASTE AND RESOURCE RECOVERY FACILITIES

	BOONAH	CANUNGRA	CENTRAL (Bromelton)	KALBAR	PEAK CROSSING	RATHDOWNEY	TAMBORINE MOUNTAIN
--	--------	----------	---------------------	--------	---------------	------------	--------------------

### NON-CHARGEABLE SERVICES (for Scenic Rim residents)

General waste	✓	✓	✓	✓	✓	✓	✓
Co-mingled recyclables (paper/cardboard, glass bottles and jars, hard plastic, cans)	✓	✓	✓	✓	✓	✓	✓
Green waste*	✓	✓	✓	X	✓	✓	✓
Car batteries	✓	✓	✓	X	✓	✓	✓
Scrap metal	✓	✓	✓	X	✓	✓	✓
Engine oil (less than 25L)	✓	✓	✓	X	✓	✓	✓
E-waste	✓	✓	✓	X	✓	✓	✓
Agricultural chemical drums (empty and triple rinsed)	✓	✓	✓	✓	X	✓	X
Paint	✓	✓	✓	X	X	X	X
Empty gas cylinders (up to 9 kg) and fire extinguishers	✓	✓	✓	X	✓	✓	✓
Mobile phones, smart watches and accessories	✓	✓	✓	X	✓	✓	✓

### CHARGEABLE SERVICES

Asbestos*	X	X	✓	X	X	X	X
Dead animals*	X	X	✓	X	X	X	X
Fridges/freezers/air cons	✓	✓	✓	X	✓	✓	✓
Tyres	✓	✓	✓	X	✓	✓	✓
Clean concrete	X	X	✓	X	X	X	X
Clean fill*	X	X	✓	X	X	X	X
Commercial waste	✓	✓	✓	X	✓	✓	✓

\*Tree stumps and tree trunks larger than 40cm will be charged at the general waste fee and can only be delivered to the Central landfill at Bromelton.

\* These services **must be booked in advance**. Please contact Council on 5540 5111.

## WASTE AND RESOURCE RECOVERY FACILITY OPERATING HOURS

### CENTRAL (BROMELTON)

**ADDRESS** 43 Waste Facility Road, Bromelton  
**HOURS** Monday–Sunday 9am–5pm

### CANUNGRA

**ADDRESS** 2036 Beaudesert– Nerang Road  
**HOURS** Monday–Wednesday 9am–5pm  
 Friday–Sunday 9am–5pm  
**CLOSED** Thursday

### TAMBORINE MOUNTAIN

**ADDRESS** 137 Knoll Road  
**HOURS** Monday & Tuesday 9am–5pm  
 Thursday–Sunday 9am–5pm  
**CLOSED** Wednesday

### BOONAH

**ADDRESS** 24 Evans Road, Dugandan  
**HOURS** Monday & Tuesday 9am–5pm  
 Thursday–Sunday 9am–5pm  
**CLOSED** Wednesday

### RATHDOWNEY

**ADDRESS** 10290 Mt Lindesay Highway  
**HOURS** Monday, Thursday, Saturday 9am–5pm  
**CLOSED** Tuesday, Wednesday, Friday and Sunday  
*Council will provide waste receptacles from 7am–9am on Mondays to allow disposal of domestic household waste only.*

### PEAK CROSSING

**ADDRESS** 62 Faulkners Quarry Road, Harrisville  
**HOURS** Wednesday 9am–12pm  
 Saturday and Sunday 1pm–5pm  
**CLOSED** Monday, Tuesday, Thursday and Friday

### KALBAR

**ADDRESS** 14 Muller Road, Fassifern  
**HOURS** Wednesday 1pm–5pm  
 Saturday–Sunday 9am–12pm  
**CLOSED** Monday, Tuesday, Thursday and Friday

Last entry to all waste facilities is **10 minutes** before closing time.

When you have finished reading me, put me in your yellow-lid recycling bin. 

FOR MORE INFORMATION, CONTACT COUNCIL

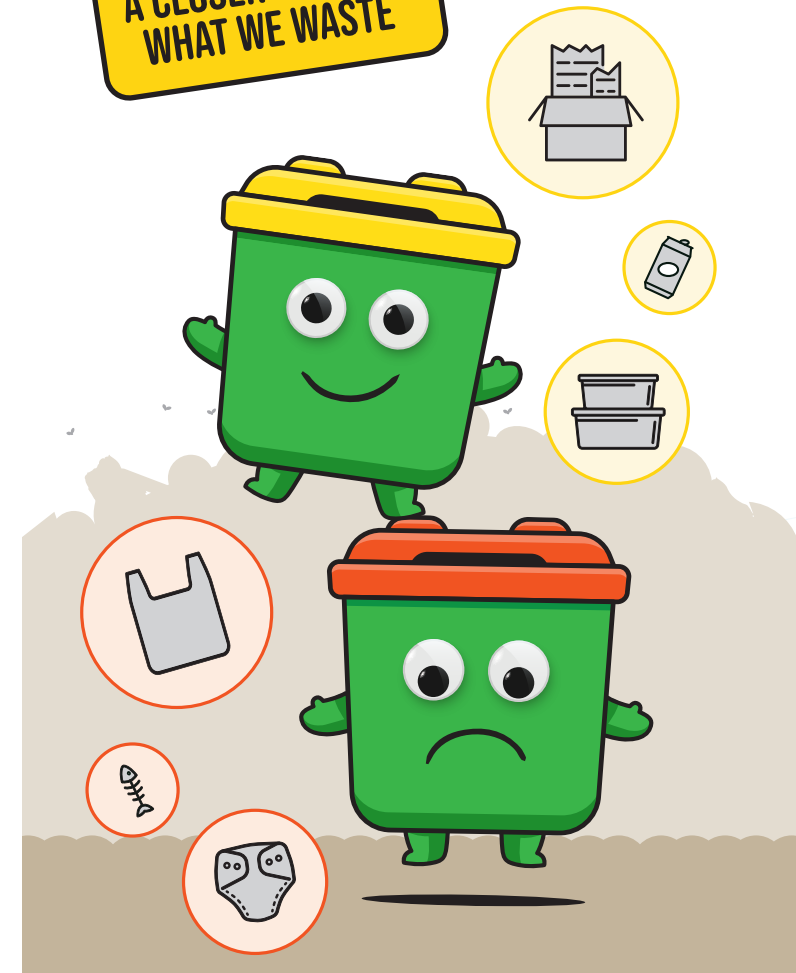


Printed on recycled paper.

SCENIC RIM REGIONAL COUNCIL

## YOUR WASTE BINS AND FACILITIES GUIDE

IT'S TIME TO TAKE A CLOSER LOOK AT WHAT WE WASTE



FOR MORE INFORMATION, CONTACT COUNCIL



Printed on recycled paper.

SCENIC RIM REGIONAL COUNCIL

# LOOK BEFORE YOU THROW!

First, check what bin an item belongs in. Separate your recycling from your general waste.

WHAT GOES IN YOUR BINS



## 2024-2025 RECYCLING BIN COLLECTION

### GENERAL WASTE



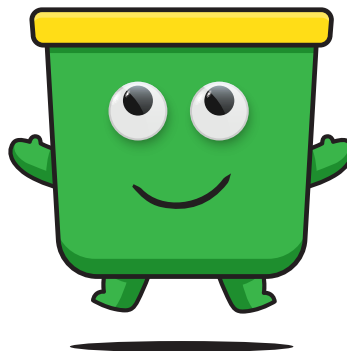
### YES

- ✓ Food waste
- ✓ Bagged general waste
- ✓ Broken crockery and glassware
- ✓ Nappies
- ✓ Rags and textiles
- ✓ Soft plastic (chip packets and wrappers)
- ✓ Polystyrene
- ✓ Bagged garden waste

### NO

- ✗ Batteries or battery containing devices
- ✗ Appliances or electronics
- ✗ Hot ashes or embers
- ✗ Construction and demolition waste (i.e. bricks, plasterboard, timber over 50cm)
- ✗ Stumps, large branches
- ✗ Unbagged lawn clippings
- ✗ Heavy items - your bin will not be emptied if it is over 70kg

### RECYCLING



### YES

- ✓ Paper and cardboard
- ✓ Glass bottles and jars
- ✓ Cans and aluminium foil
- ✓ Hard plastic containers and packaging

### NO

- ✗ Plastic bags and soft plastics
- ✗ Batteries or battery containing devices
- ✗ Bottle caps and lids
- ✗ Appliances or electronics
- ✗ Hot ashes or embers
- ✗ Construction and demolition waste
- ✗ Garden waste or lawn clippings
- ✗ Nappies
- ✗ Food
- ✗ Broken crockery and glassware

AUGUST 2024						
M	T	W	T	F	S	S
		1	2	3	4	
5	6	7	8	9	10	11
12	13	14	15	16	17	18
19	20	21	22	23	24	25
26	27	28	29	30	31	

SEPTEMBER 2024						
M	T	W	T	F	S	S
						1
2	3	4	5	6	7	8
9	10	11	12	13	14	15
16	17	18	19	20	21	22
23	24	25	26	27	28	29

OCTOBER 2024						
M	T	W	T	F	S	S
			1	2	3	4
5	6	7	8	9	10	11
12	13	14	15	16	17	18
19	20	21	22	23	24	25
26	27	28	29	30	31	

NOVEMBER 2024						
M	T	W	T	F	S	S
					1	2
3	4	5	6	7	8	9
10	11	12	13	14	15	16
17	18	19	20	21	22	23
24	25	26	27	28	29	30

DECEMBER 2024						
M	T	W	T	F	S	S
						1
2	3	4	5	6	7	8
9	10	11	12	13	14	15
16	17	18	19	20	21	22
23	24	25	26	27	28	29

JANUARY 2025						
M	T	W	T	F	S	S
						1
2	3	4	5	6	7	8
9	10	11	12	13	14	15
16	17	18	19	20	21	22
23	24	25	26	27	28	29

FEBRUARY 2025						
M	T	W	T	F	S	S
						1
2	3	4	5	6	7	8
9	10	11	12	13	14	15
16	17	18	19	20	21	22
23	24	25	26	27	28	29

MARCH 2025						
M	T	W	T	F	S	S
						1
2	3	4	5	6	7	8
9	10	11	12	13	14	15
16	17	18	19	20	21	22
23	24	25	26	27	28	29

APRIL 2025						
M	T	W	T	F	S	S
						1
2	3	4	5	6	7	8
9	10	11	12	13	14	15
16	17	18	19	20	21	22
23	24	25	26	27	28	29

MAY 2025						
M	T	W	T	F	S	S
						1
2	3	4	5	6	7	8
9	10	11	12	13	14	15
16	17	18	19	20	21	22
23	24	25	26	27	28	29

JUNE 2025						
M	T	W	T	F	S	S
						1
2	3	4	5	6	7	8
9	10	11	12	13	14	15
16	17	18	19	20	21	22
23	24	25	26	27	28	29

JULY 2025						
M	T	W	T	F	S	S
						1
2	3	4	5	6	7	8
9	10	11	12	13	14	15
16	17	18	19	20	21	22
23	24	25	26	27	28	29

My collection day is: .....

My recycle bin collection week is:  Blue  Red

\*Your yellow-lid recycling bin is collected fortnightly.

When you have finished reading me, put me in your yellow-lid recycling bin.



FIND YOUR BIN COLLECTION DAY



Printed on recycled paper.

SCENIC RIM REGIONAL COUNCIL