

# The Shelf Road, Tamborine Mountain

April 2025 Update

## Landslip Remediation and Road Realignment

As part of Council's ongoing commitment to delivering an accessible and serviced region, Council is undertaking remediation works following disaster events on The Shelf Road, Tamborine Mountain. This project is jointly funded by the Australian and Queensland governments under the Disaster Recovery Funding Arrangements.

Works will involve relocation of the damaged section of The Shelf Road to a new alignment next to the current road. These remediation works will return damaged assets to their pre-disaster condition, in accordance with relevant standards and guidelines.

Measures have been implemented to mitigate any environmental impacts, and include protecting vulnerable plants and wildlife, as well as ensuring the area is restored and revegetated as closely as possible to its original condition following construction.

### When will it happen?

Early preparation works have been completed including the installation of nest boxes, the relocation of protected trees, tree clearing, and the relocation of Energex-owned electrical services.

Further preparation works, including the relocation of services, are expected to commence in April 2025 and will take approximately 4 weeks to complete. Works will involve trenching and installation of temporary and permanent conduits and cables.

Road construction activities are expected to commence in mid-2025 and will take approximately 10 months to complete, weather and construction conditions permitting. Further notification will be provided when timeframes are confirmed.

Works will generally occur between 6.00am to 6.00pm Monday to Friday, and may include Saturday works when activities are required.

### Where will it happen?

Works will occur on The Shelf Road at Tamborine Mountain, approximately 250 metres from Bartle Road.

### What can I expect?

The Shelf Road access will remain open for the duration of these works under temporary traffic management. Access will be maintained to all properties. Construction plant will be active in the area during project construction, and there will be noise and vibration at the sites.

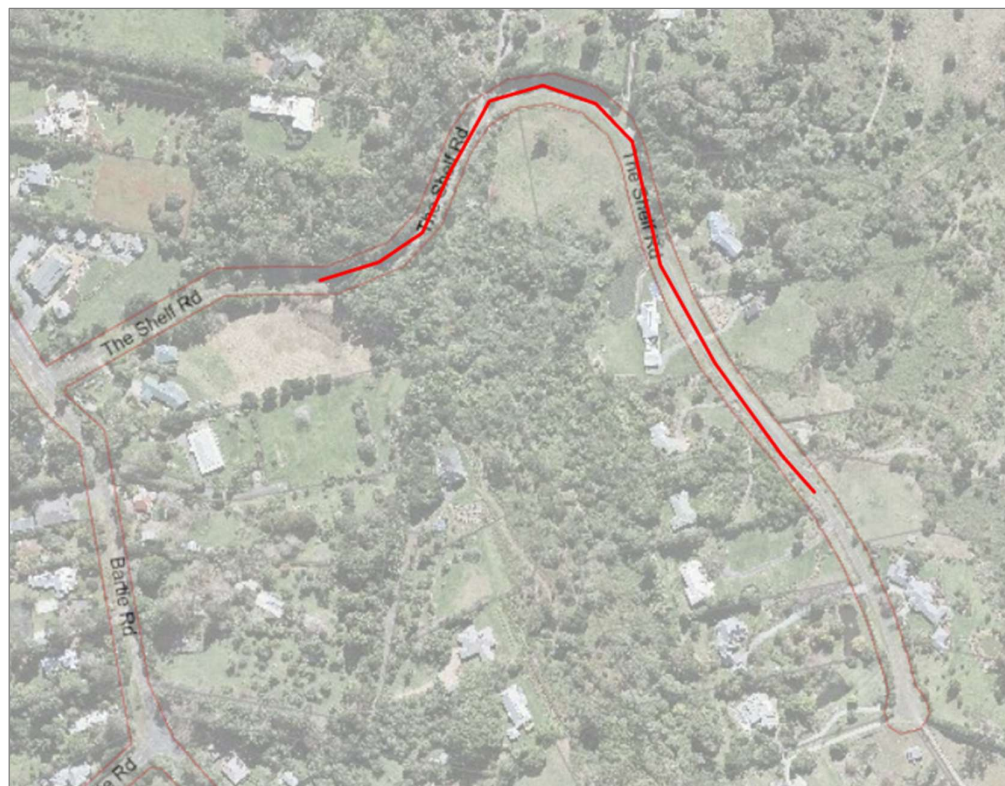
Minor service interruptions may be experienced to communications and internet which will be notified through your provider.

Your patience and understanding are appreciated as Council delivers this improvement to the road network.

## Questions?

You are encouraged to contact Council's Project Manager on 07 5540 5111 email [mail@scenicrim.qld.gov.au](mailto:mail@scenicrim.qld.gov.au) if you would like to discuss specific details or arrangements in relation to the proposed works.

## Location of Works



*Assistance for this project is jointly funded by the Australian and Queensland governments through the Disaster Recovery Funding Arrangements.*



**Australian Government**



**Queensland Government**

**SCENIC RIM**



REGIONAL COUNCIL