

# Scenic Living

SCENIC RIM REGIONAL COUNCIL



**I would like to take the opportunity to thank everyone who has contributed to the development of Council's 2025-2026 Budget and associated Capital Works Program which reflect the current economic climate and the current management practices of Council.**

The challenges of bringing to the Scenic Rim the change that the people of this region voted for will take the full term of this Council and, while there will be no easy solutions, it is the undertaking of Councillors to gain a clear picture of the services provided to the community with the intention of driving out waste, improving productivity and increasing efficiency. The budget process that commenced in April 2025 has come to fruition with the valuable input of members of our community.

I wish to especially acknowledge the contribution of residents and ratepayers who attended the Beaudesert, Boonah and Tamborine Mountain budget consultation meetings during May this year, as well as those who made written submissions in response to the Draft Budget.

This process of community consultation has once again proved valuable and we saw some innovative ideas put forward that will contribute to community projects outside budget constraints.

Significant items within the \$119.6 million 2025-2026 Budget include a major information systems modernisation project and additional funding for the renewal of roads included in a \$29.1 million capital works program. This includes Australian and Queensland Government capital grants funding of \$4.5 million.

Cognisant of the financial pressures being experienced by members of our community, Council has aimed to keep rate rises to a minimum with an average increase of 4.5 per cent in the General Rates.

Representing 64 per cent of Scenic Rim ratepayers, residential principal place of residence properties will see an average increase of 4.5 per cent. Rates for rural principal place of residence properties, representing seven per cent of Scenic Rim ratepayers, will also see an average increase of 4.5 per cent.

In addition to cost of living pressures faced by ratepayers, the 2025-2026 Budget has been developed against a background of Council's increasing costs of fuel, energy, materials and plant purchases.

Council's waste charges have increased by some nine per cent due to an increase in the State Waste Disposal Levy from \$115 to \$125 per tonne and a reduction in the Queensland Government's domestic reimbursement of the State Waste Disposal Levy from 85 per cent to 70 per cent.

To help address these challenges, Council is working to identify opportunities to reduce costs across the organisation going forward.

Council's investment of \$5.5 million over the next three years on upgrades to Information and Communication Technology (ICT) systems is also aimed at enhancing its efficiency and service delivery to ratepayers.

Through its advocacy, Council will continue to seek to leverage grant funding and, wherever possible, enter into partnerships with the state and federal governments to obtain grants to support the delivery of services and infrastructure.

This is a budget focused on the basics of services and infrastructure to be provided to ratepayers while keeping our region moving forward.

**Mayor  
Tom Sharp**



*Fire trail under construction in a reserve at Gleneagle 2021.*

## ENVIRONMENTAL CHARGE

adds to region's natural values

**The introduction of an annual \$50 Environmental Charge in Council's 2025-2026 Budget will help to preserve and enhance the Scenic Rim's natural values.**

By raising \$1.05 million each year, the new charge will provide for a range of environmental programs.

Importantly, the Environmental Charge will also fund the creation of a program to strategically improve and manage the region's network of fire trails which help to protect the lives and properties of Scenic Rim residents.

The 2019 bushfires were a stark reminder of the need to be aware of the threat of bushfire in residential areas which are surrounded by large tracts of natural bushland.

As storms and bushfires become more unpredictable and potentially severe, improving the maintenance of the current fire trail network and identifying and creating new trails will help to better protect the region's natural and built assets from the bushfire risk.

## BUDGET highlights



**\$119.6M**

Total Budget



**\$33.9M**

Transport  
infrastructure  
network



**\$14.29M**  
WASTE SERVICES



**\$14.12M**  
CAPITAL  
EXPENDITURE  
ON ROADS



**\$3.39M**  
BRIDGES



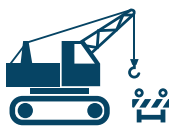
**\$2.76M**  
LIBRARY SERVICES



**\$1.46M**  
COMMUNITY  
DEVELOPMENT



**\$890K**  
CAPITAL  
EXPENDITURE  
ON FOOTPATHS



**\$13.31M**  
ROAD  
MAINTENANCE



**\$7.53M**  
COMMUNITY  
FACILITIES  
OPERATIONS AND  
MAINTENANCE



**\$4.43M**  
PARKS AND  
LANDSCAPE  
MAINTENANCE



**\$2.01M**  
INFORMATION  
SYSTEMS  
MODERNISATION  
PROJECT

To view the full  
Budget scan  
this QR code



## CAPITAL WORKS

account for almost a quarter of 2025-2026 Budget

**A \$29.1 million capital works program headlines Scenic Rim Regional Council's \$119.6 million 2025-2026 Budget.**

Including capital grants of \$4.54 million, the 2025-2026 capital works program reflects Council's commitment to developing and maintaining the infrastructure required for the region's continued growth.

Council's focus on roads, bridges, footpaths and drainage as well as parks and gardens, waste management and the maintenance and upgrade of community facilities continues to reflect community priorities.

More than \$14 million has been allocated to roads, almost \$3.39 million for works relating to bridges and almost \$2.7 million for facilities maintenance – all of which highlight Council's ongoing investment in keeping the Scenic Rim connected and moving forward.

Major capital works projects planned for 2025-2026 include:

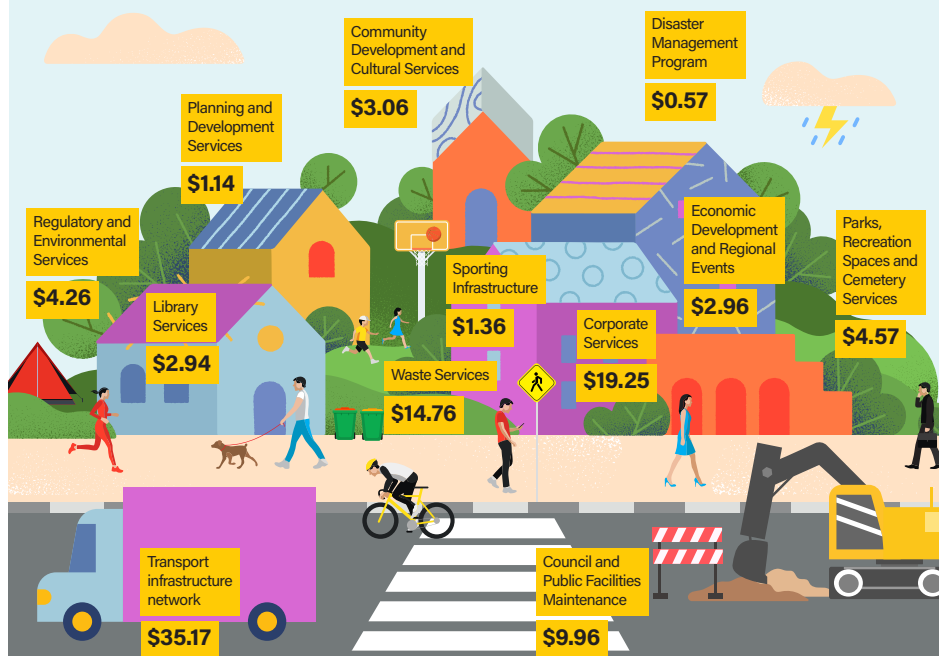
- the reseal and rehabilitation of Council's sealed road network (\$5.8 million)

- works to improve Beechmont Road at Witheren (\$2 million)
- the continuation of roadworks at Veresdale Scrub Road, from Mount Lindesay Highway to Fields Road (\$1.86 million; with a further \$1.86 million in the following year as well)
- Kooralbyn Road at Laravale (\$1.49 million of Blackspot Funding)
- Undullah Road at Allenview (\$812,700)
- the continuation of the Kerry Road upgrade, Stage 2 (\$500,000) with a further \$4.09 million in the following year
- the development of new and upgraded footpaths (\$885,000), and
- the upgrade and replacement of sections of the region's drainage network (\$859,000).

More than \$2.68 million in the capital works program has been allocated to the renewal and upgrade of Council and community facilities.

Council will continue to invest in its Bromelton landfill site with a total of more than \$708,000 of the \$827,000 allocated to capital works for waste management.

## FOR EVERY \$100 IN GENERAL RATES— WHERE YOUR RATES GO.





# JOIN THE CONVERSATION TODAY

## Register for Let's Talk Scenic Rim

**Join us on Council's online community engagement platform, Let's Talk Scenic Rim, and share your thoughts on matters that are important to you for our region.**

Effective community engagement is the cornerstone of good decision making and Council is committed to consulting with the community on a range of topics to ensure meaningful outcomes.

As part of Council's ongoing efforts to enhance services to the Scenic Rim community, feedback from this platform helps in understanding the diverse needs

of residents, enabling strategies to be tailored to meet the specific groups and ensuring wide-ranging perspectives are considered.

Registering on the Let's Talk Scenic Rim platform offers the opportunity to:

- provide feedback on Council projects that are open for consultation and follow a project's progress, and
- join consultations without signing in each time, making it easier to stay involved.

By completing a one-time registration process, you'll receive important monthly updates delivered directly to your inbox on projects, community consultation and other Council initiatives and news.

Your views are important to us! Register today on Let's Talk Scenic Rim

Scan the QR code below to sign up!



**Let's talk**  
Scenic Rim



### CREATIVE SCENIC RIM

An insight into what's happening across our vibrant and thriving cultural community.

**CREATIVE**  
SCENIC RIM



### WHAT'S ON AT THE LIBRARY!

Find your next book, e-book or audiobook, free workshops, and community activities.

**SCENIC RIM**  
**LIBRARIES**



### BE HEALTHY AND ACTIVE

Access free and low-cost activities to support your health and wellbeing.

*Be*  
**HEALTHY**  
*and* **ACTIVE**



### WHAT'S ON SCENIC RIM

Your go-to guide for everything to see and do in the Scenic Rim.



### CUPPA IN THE COMMUNI-TEA

Find out where you can join us for a free cuppa and a chat.



### DISASTER DASHBOARD

Keep your family safe by signing up today.

**DISASTER**  
**DASHBOARD**



# YOUR SCENIC RIM

## Councillors



### Divisional Map



# DOG REGISTRATIONS

due now



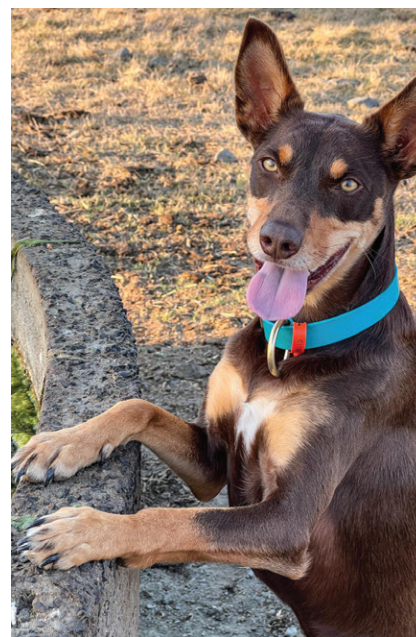
**Every dog has its day and in the Scenic Rim it's Thursday 31 July — the due date for dog registration renewals.**

All dogs over the age of three months must be registered with Council and wear the Council-provided dog registration tag.

Concessions are available for desexed dogs, dogs owned by pensioners or those who are current financial members of Dogs Queensland or the Queensland Racing Integrity Commission.

In addition to dog registration, it's also important to check your pet's microchip details are current so you know that when the chips are down you can be reunited with your furry friend.

Need to register your dog for the first time? Just scan this QR code for details.



# NEVER BIN BATTERIES

– they can easily spark a fire

**Council is set to begin rolling out a new campaign to raise awareness of the risk of waste truck and landfill fires from the incorrect disposal of batteries.**

Waste trucks across the Scenic Rim will soon be carrying the message alerting residents not to bin batteries which can spark fires, putting at risk the safety of drivers and members of the community.

Even household batteries can start a fire if they are crushed or compacted in waste trucks or at landfill sites.

Worldwide there has also been a rise in the number of fires started by lithium-ion batteries from rechargeable devices which can re-ignite even after the blaze has been extinguished.

Scenic Rim residents are asked not to dispose of batteries through their household bins but to take them to a battery recycling drop-off point.

These can be found at many major supermarkets and hardware stores across the region. The full list of locations can be found on Australia's official battery recycling scheme website [bcycle.com.au](http://bcycle.com.au)

# NEVER BIN BATTERIES

Trucks catch on **FIRE**

Find more information at [scenicrim.qld.gov.au](http://scenicrim.qld.gov.au)

